

How to Make a Milkweed Mouse

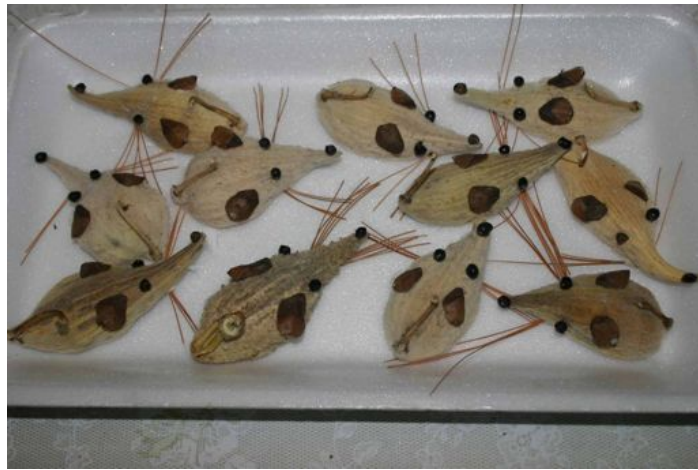


Remove the milkweed seeds from a dry pod



Remove the piece to which the seeds were attached.





Leave the stem that attached the pod to the plant. It becomes the tail.
Add eyes, a nose and whiskers.
Pine needles make good whiskers.
Use seeds for the eyes and nose.
Parts of pine cones can make ears.

© Dr. Hildegard Kuse and Dr. Loretta Kuse