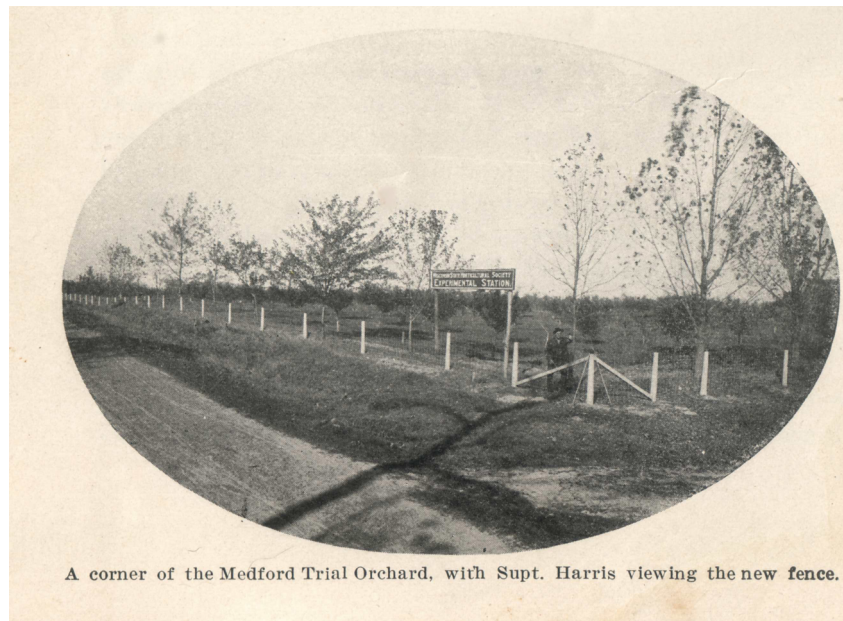


Look to the north. Woodland Avenue was once known to residents as Harris's Road. Sam Harris, his wife, and their family lived in a big square house up on the hill.

Sam was a dairy farmer and horticulturist. The Harris farm was known as Pleasant View Farm. The family raised purebred Guernsey cattle.

Sam also sold nursery stock to many people in the area. He worked with scientists in the State Horticultural Society to plant an experimental apple orchard. It had 300 trees. A few of them still stand today. People were trying to determine which varieties of apple trees would grow best in this area. Sam also planted large cottonwood trees along the road. A few of them are still standing today and they are over 100 years old.



A corner of the Medford Trial Orchard, with Supt. Harris viewing the new fence.

**Picture Taken at Corner of Allman and Woodland Avenue**

Sam's brother worked out west and brought spruce trees from the Black Hills to Medford. Descendents of those trees are along Allman Avenue on the Kuse farm. Look to the north for those spruce trees.



**Black Hill Spruce Trees**