

Porcupine Paper Bag Puppets

The porcupine is protected with short, sharp quills that come out easily if an animal attempts to grab it. This protection allows the animal to move slowly up and down trees and gnaw at the branches.

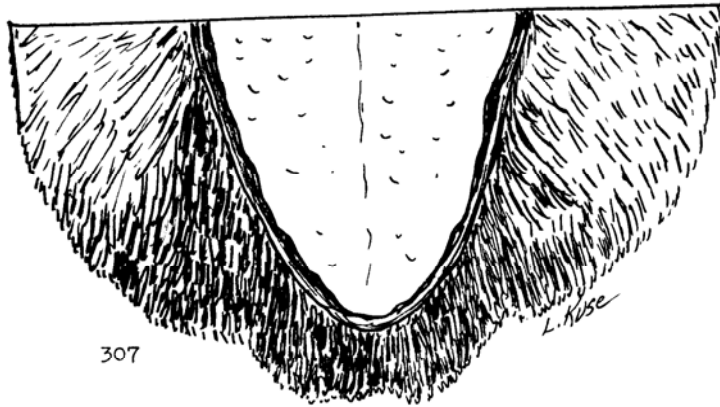
A porcupine does not hibernate, so when winter comes and fresh vegetation is not available, it will eat tree bark. A porcupine may spend a long time in one tree eating the bark from the branches before it goes on to another.

Activities

- Watch the video about porcupines. Learn about how the video was made.
- Read printed material about porcupines.
- Do research to learn about the uses of porcupine quills in Native American art.
- Have a porcupine puppet tell how it adapts to the environment and lives during various seasons.
- Add the puppet to a collection for teaching the alphabet.
- Design murals that show the appropriate environment for a porcupine during each season of the year. Have the puppet tell about the space, food, shelter, and relationships it needs to survive.
- Do research about porcupine populations in your area. Have a puppet share information found by using local maps.
- Use the puppet to teach related vocabulary words such as quill, bar, rodent, and bristles of hairs.
- Learn about the life cycle of the porcupine. Plot it on a time line. Have the puppet tell about its life.

Kuse, H., and Kuse L. (1989). Puppets: 1001 ways to make and use them. Cedar Falls, Iowa: University of Northern Iowa, pp. 307-309.

Porcupine



307

L. Kise

